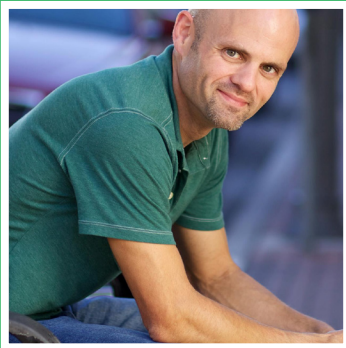


# PALM VALLEY CHURCH 2019 MISSION TRIP

## ISRAEL

### Formation Trip



**TEAM LEADER:**  
JERRELL JOBE

**WHERE:**  
ISRAEL

**WHEN:**  
JUNE 29 - JULY 9, 2019

**COST:**  
\$4,200

**MAXIMUM NUMBER:**  
35

**REGISTRATION DEADLINE:**  
MARCH 8, 2019

For more information email:  
[jerrellj@palmvalleychurch.com](mailto:jerrellj@palmvalleychurch.com)

### OVERVIEW

It's been said that there are 5 gospels: Mathew, Mark, Luke, John and the land of the Bible. We will journey into the scriptures as we walk where Jesus walked and performed many of his miracles. During the course of our ten-day pilgrimage to the Holy Land, you will experience the text of the Bible literally leap off the page as we read the stories in the places they happened, and engage the world of the Bible in its historical and cultural contexts. Never again will you read the Bible the same.

### IDEAL FOR

Those hungry to see the world of the Bible come alive and fall deeper in love with Jesus.

### COST: \$4,200

This amount includes everything: airfare from McAllen to Israel, all lodging and meals while in Israel. It also covers all travel and sight-seeing throughout Israel. A \$200.00 deposit is due once your application has been accepted. The remaining balance will be divided up into five payments. \*See payment plan.

### HOW TO SIGN UP

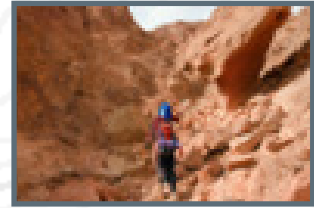
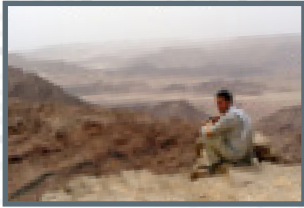
You may pick up an application at the kiosk or fill out one online. Due to the nature of the trip, space is limited. There will be several pre-trip meetings prior to departure. These times will be geared to help us gain the most from our journey to Israel.

### SHEMA

*Shema Israel, Adonai  
elohenu, Adonai  
echad, Ve'ahavta  
et Adonai eloeikah,  
b'khol levavkah,  
uve'khol naphshekah,  
uve'khol m'odekah.*

*Hear O Israel! The  
Lord is our God,  
the Lord alone,  
love the Lord your  
God with all your  
heart, with all your  
soul, and with all  
your might!*





# TRIP ITINERARY

## PAYMENT SCHEDULE

### DEPOSIT

**\$200**

**DECEMBER 2**

**\$800**

**JANUARY 6**

**\$800**

**FEBRUARY 3**

**\$800**

**MARCH 3**

**\$800**

**APRIL 7**

**\$800**

TRIP COST IS \$4,300 FOR REGISTRATIONS AFTER JANUARY 1, 2019

Friday: **Depart** from McAllen at 2:15 p.m.

Saturday: **Arrive** in Tel Aviv at 9:55 p.m.

Monday: **Wilderness // Shephelah** - Bet Shemesh, Azekah, Maresha, Bet Gurvin, Caves of Adulum, Shepherds Cave

Tuesday: **Wilderness // Negev** - Wilderness of Zin, Masada, Dead Sea

Wednesday: **Wilderness // Negev** - Ein Gedi, Qumran Caves, Sea of Galilee

Thursday: **Galilee** // Mt. Arbel, Tabgha, Areamos Topos, Capernaum, Chorazin

Friday: **Galilee** // Dan, Caesarea Philippi, Qatzrin, Jordan River

Saturday: **Jerusalem** // Caesarea Maritima, Herodium, Bethlehem

Sunday: **Jerusalem** // Temple Mount, Western Wall, Rabbinic Tunnels, Sadducee's House Hezekiah's Tunnel

Monday: **Jerusalem** // Mt. Of Olives, St. Anne's, Bethesda, Garden Tomb, City Model, Old City,

Tuesday:

**Depart** Israel at 9:55 a.m. // **Arrive** in McAllen at 10:45 p.m.

*\*Note: The above itinerary is meant to provide a framework for the various places we will be visiting. There may be slight changes to the specific places listed above.*

## ESSENTIALS

- A teachable spirit
- A servant's heart
- A team spirit
- A willing worker
- A positive outlook
- A flexible attitude
- A valid passport (through Sep. 2020)

## MEETINGS

In preparation for this trip, there will be several meetings you will be required to attend. During these meetings we will communicate valuable information, train, and debrief all things related to this trip. The team leader will contact you with the meeting dates.

# FREQUENTLY ASKED QUESTIONS

## IS IT SAFE TO TRAVEL TO ISRAEL?

Although it is impossible to promise 100% safety, travel in Israel is currently safe. We will always travel with an Israeli guide, who will serve to assist us during our journeys. He is very aware of what's going on in the country. If there is even a hint of potential danger, we will simply avoid the area. We will not take chances. Overall, the likelihood of any kind of danger is very, very slim. We won't go anywhere I wouldn't take my kids!

## WHAT CAN I EXPECT ON A TYPICAL DAY?

A normal day will begin with breakfast at 6:30 a.m., devotions at 7:00 and by 7:10 we're on our way! In order to accomplish what God sets out for us to experience. The majority of our days will involve moderate hiking. We will travel to the various sites by bus, there our hikes will begin. It is during these hikes and at these sites, where God's word is studied in its historical, cultural, geographical, and Jewish contexts. Lunch will be served on location. At the end of a long day, we will have a great meal and a much needed night's rest. The hotels are quite accommodating.

## ARE THERE ANY PHYSICAL REQUIREMENTS?

There is no level ground in Israel and we'll be hiking about 5-miles each day of the trip. If physical exercise is not currently part of your weekly rhythm, begin now. This can't be emphasized enough. The first thing that goes when you become physically tired is your mind. The more physically prepared you are, the better your mind will be. The trip will be more meaningful, educational and fun if you prepare in advance for the activity level necessary. It is recommended to engage some physical training that includes cardio and strength training. Stair climbing (actual stairs or machine), lunges, bike riding, running, and long walks are all very good. Additionally, hiking and climbing of stairs with a backpack (including your Bible, notes, water bottles, etc.) is good practice for the body to recognize the additional weight it needs to carry on the trip.

I realize this information on the physical demands may be intimidating for some of you. Please don't be overwhelmed by this. I trust that if you begin intentionally preparing yourself spiritually mentally and physically, by next summer you will be more than ready for the adventure. We'll work together and we'll all get through it. The point is not the destination, but the journey. So get in the best shape as you can. The journey begins now.

You should consult your physician concerning these requirements and any medications or conditions which may have an impact on your ability to participate fully. Prescription drugs you anticipate using during the trip should be packed both in your suitcase and your carry-on. We suggest you bring along a written prescription as well, just in case of emergency. Please contact your health provider to check your coverage when traveling outside the United States. Traveling to the lands of the Bible requires no immunizations though you'll want to be sure your tetanus shot is current.